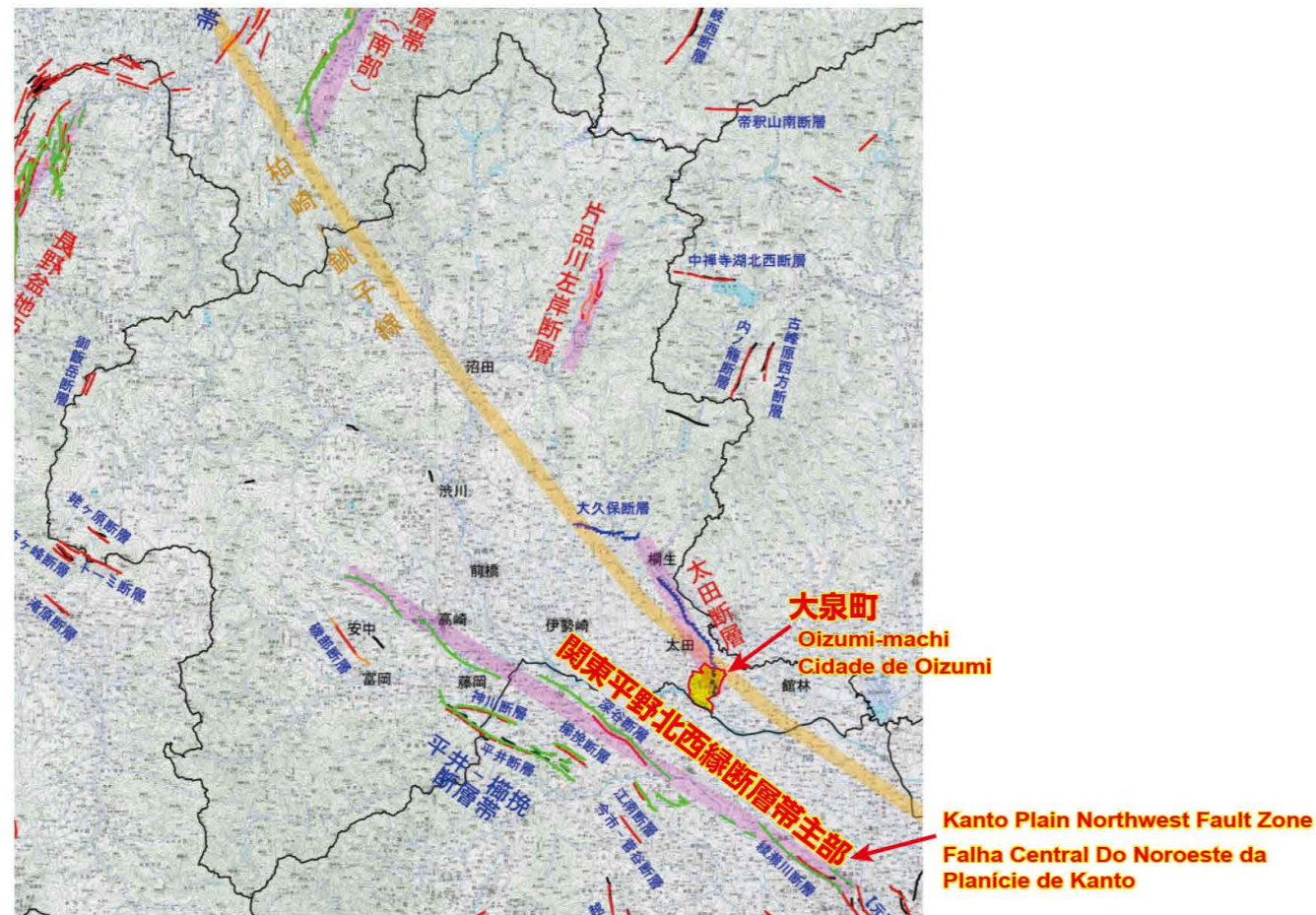


揺れやすさマップ1 (関東平野北西縁断層帯主部)

Quake map 1 (Kanto Plain Northwest Fault Zone)
 Mapa de Nível de Tremor 1 (Falha Central Do Noroeste da Planície de Kanto)

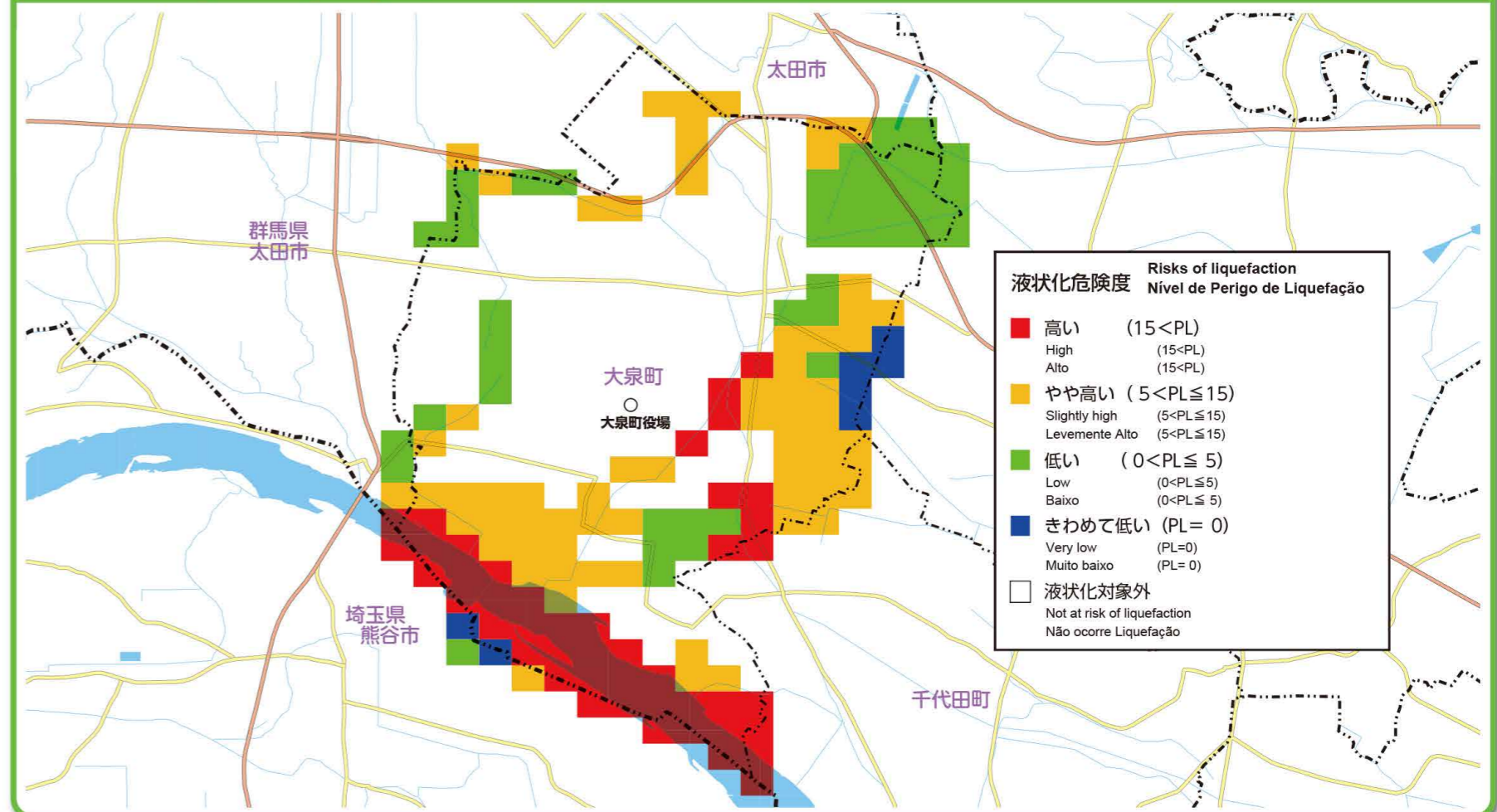
想定断層(帯)と想定断層のモデルの位置図

The supposed geologic faults (zones) and their location map
 Modelo e Posição Aproximada da Falha (Linha)



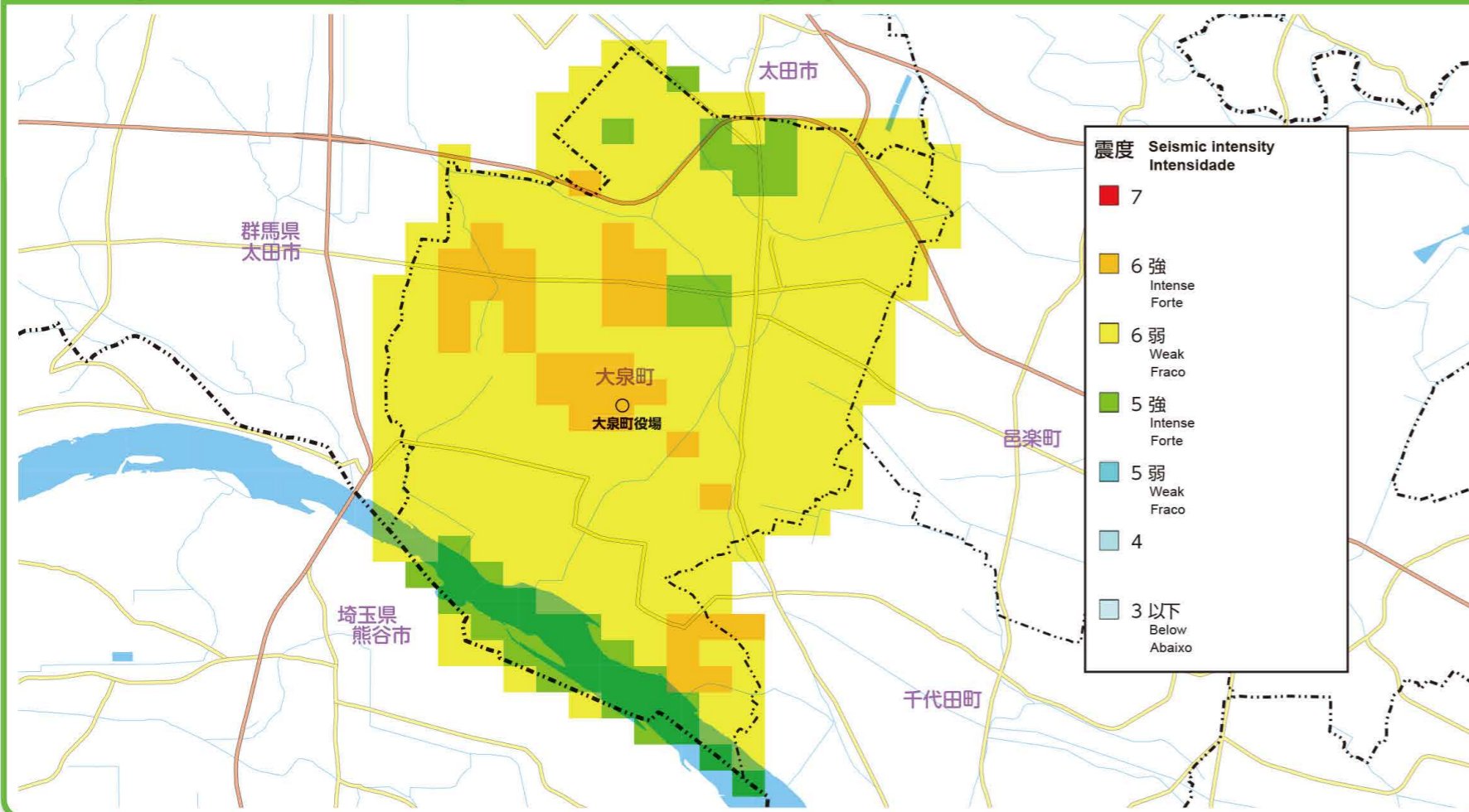
関東平野北西縁断層帯主部による地震 (M8.1) における液状化危険度

The risks of liquefaction in the event of an earthquake (magnitude 8.1) in the Kanto Plain Northwest Fault Zone
 Nível de Perigo de Liquefação por ocasional Terremoto (M8.1) na Falha Central Do Noroeste da Planície de Kanto



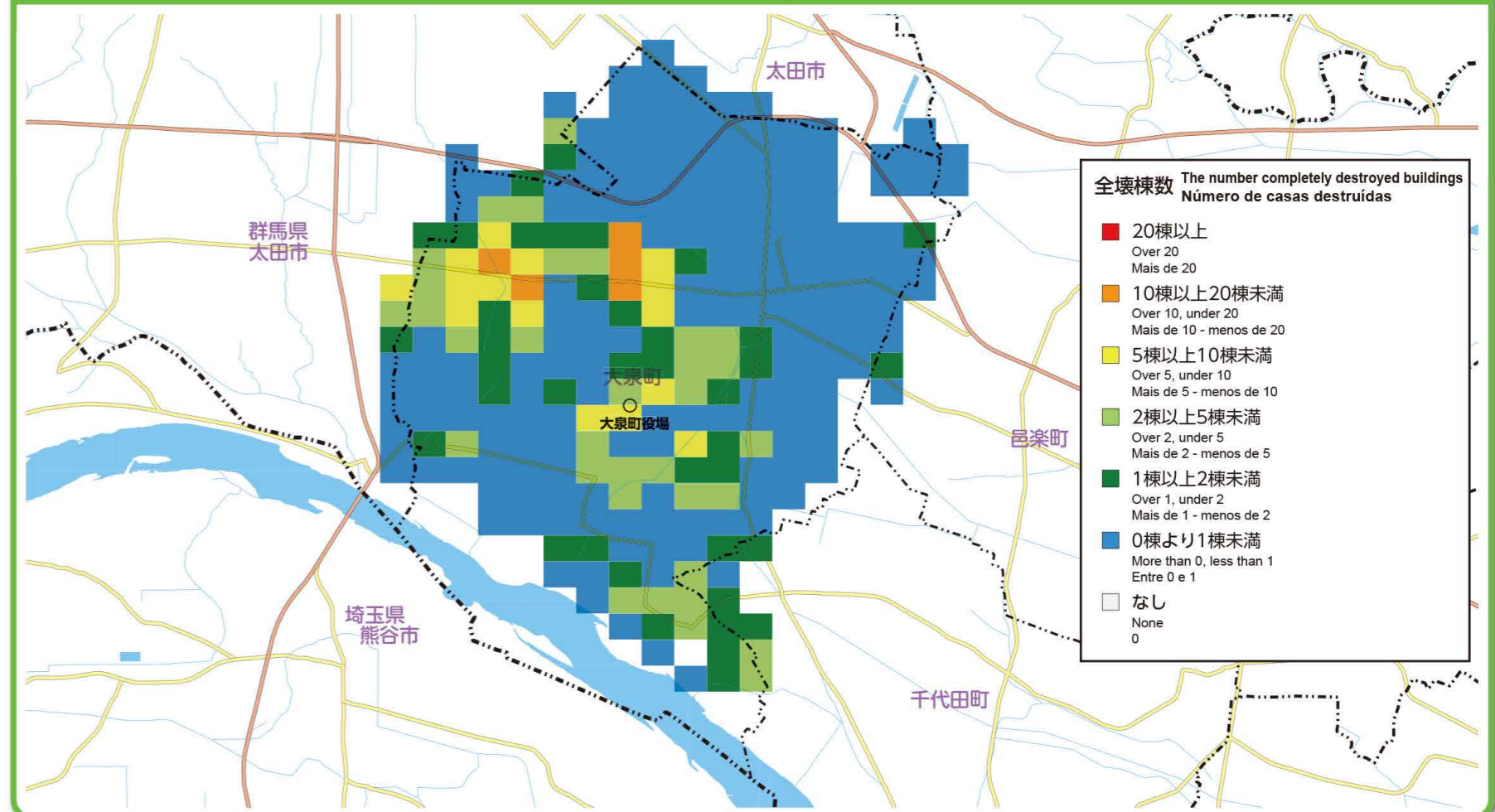
関東平野北西縁断層帯主部による地震 (M8.1) の場合の地表震度分布図

The distribution map of surface seismic intensity in the event of an earthquake (magnitude 8.1) in the Kanto Plain Northwest Fault Zone
 Distribuição de Tremor Superficial por ocasional Terremoto (M8.1) na Falha Central Do Noroeste da Planície de Kanto



揺れによる全壊棟数分布 (関東平野北西縁断層帯主部)

The distribution of the number of buildings completely destroyed by the quake (Kanto Plain Northwest Fault Zone)
 Número de casas totalmente destruídas pelo tremor (Falha Central Do Noroeste da Planície de Kanto)



群馬県地震被害想定調査に基づいて作成しています。

The estimates are based on Gunma Prefecture's Earthquake Hazard Study.
 Produzido de acordo com a Pesquisa de Estimativa de Danos Causados por Terremoto em Gunma-ken.